

Bert Maxwell Boat Ramp: Replacement of Piers

Before



After

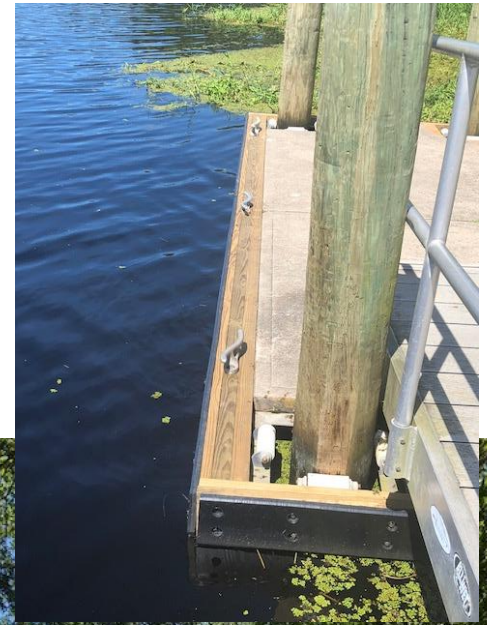


Hood Landing Boat Ramp: Before Renovations



Hood Landing Boat Ramp: After Renovations

- Stabilize shoulders for parking
- Replace access piers & dock components
- Repair ramp
- Add lights



Northshore Park: Kayak Launch

Before



After



Charles Reese Memorial Park: Shoreline Before



Derelict Boat Ramp



Charles Reese Memorial Park: After

- 100' fishing pier, revetment & parking (FIND)
- Kayak launch improvements – fall/winter 2018 (UAE)



Jim King Park at Sisters Creek: Dock Modifications

- Relocate docks into deeper water

Before



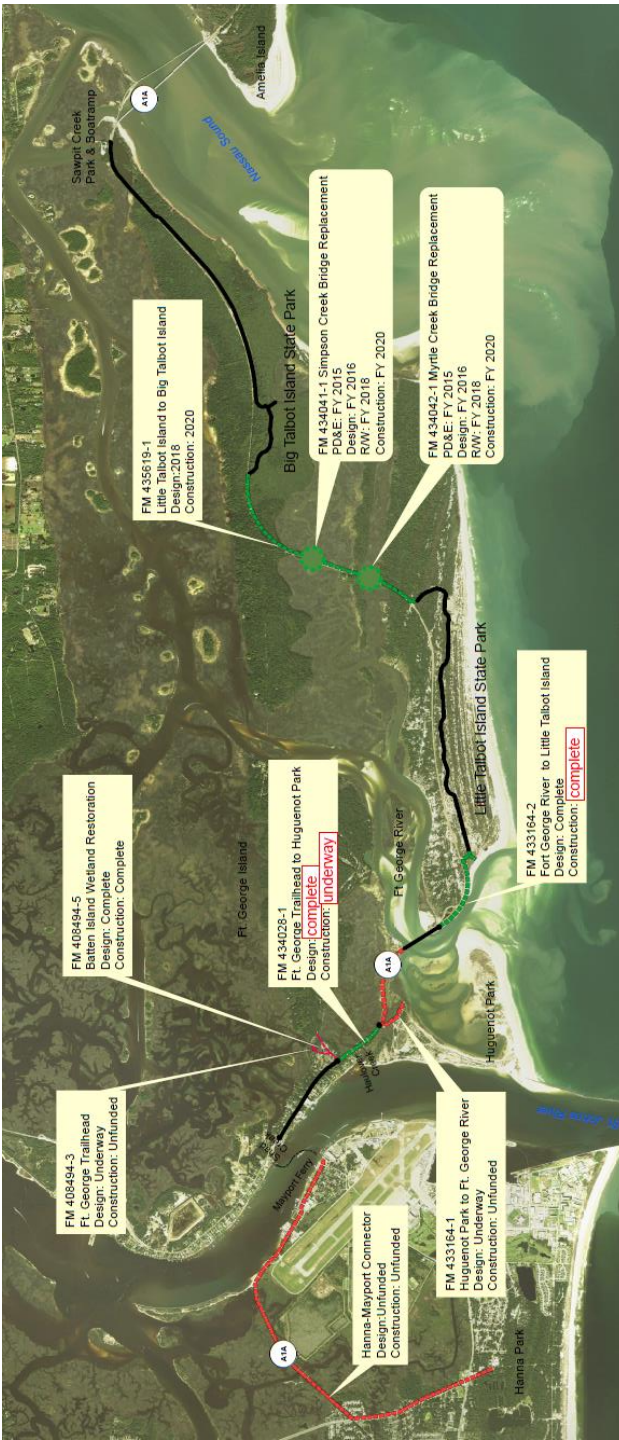
Under Construction



Timucuan Trail:

- Segment between Ferry and Huguenot

Under Construction



Huguenot Memorial Park

- Campground partially reopened 8/23
- New picnic shelter
- New beach access road – Spring '19

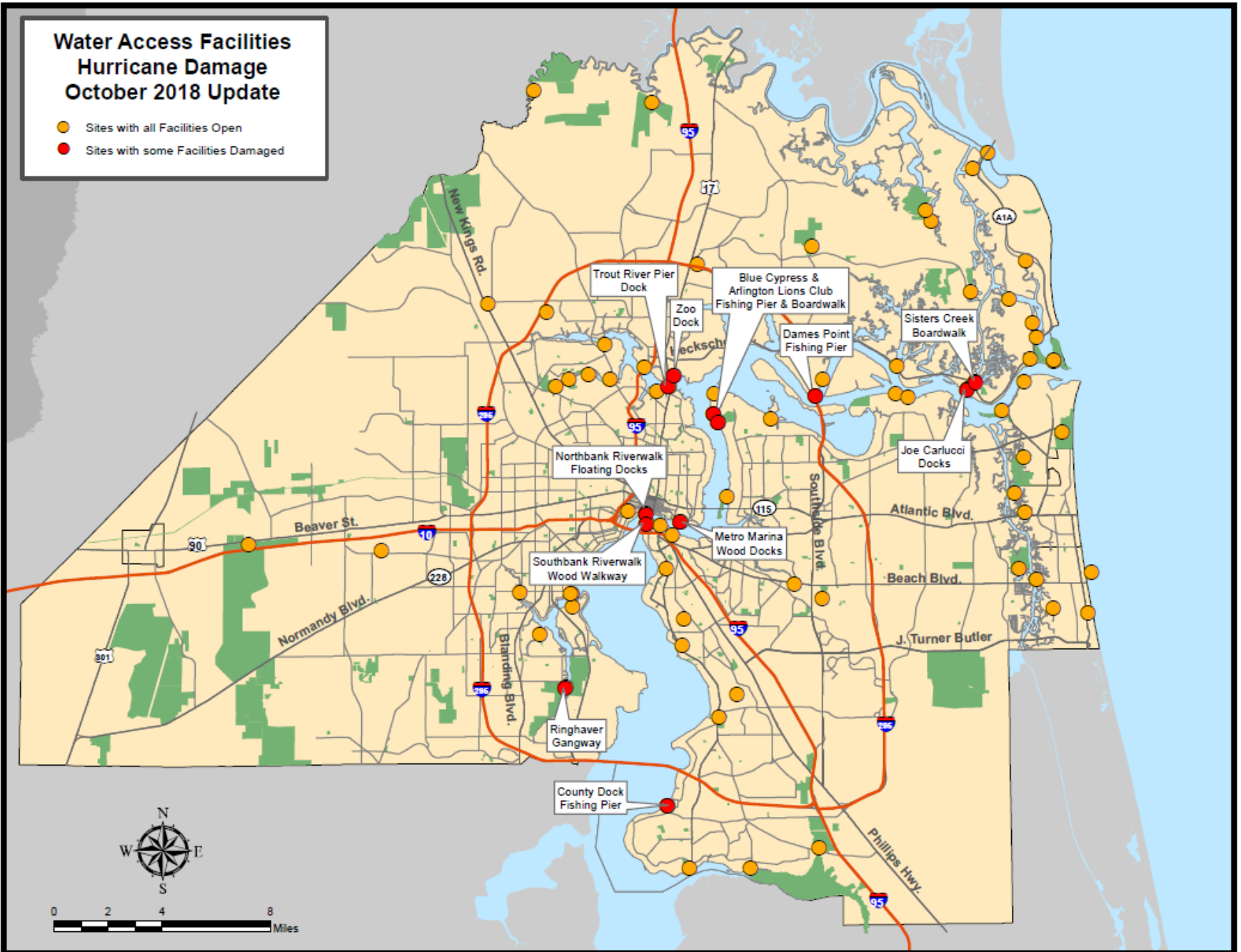


**Hurricane Dock Damage
Status Updates - October 4, 2018
Completed Projects**

Park	Damaged Amenity	Status of Work
Alimacani Park / Boat Ramp	Gangway and Walkway	Complete
A. Phillip Randolph Dock	Floating Dock	Complete
Arlington Lions Club Park	Floating docks	Complete
Bert Maxwell Park	Gangway and Wooden Dock	Complete
River Taxi Stop - Friendship Fountain	Gangway and Floating Dock	Complete
T. K. Stokes	Floating Dock	Complete
Harborview Boat Ramp	Gangway	Complete
Jim King Boat Ramp	Gangway and Floating docks	Complete
Lonnie Wurm Park	Wooden Dock and Gangway	Complete
Mayport / Michael B. Scanlon Boat Landing	Gangway and Floating docks	Complete
Metro Park Marina	Marina Floating Docks	Complete
Palms Fish Camp	Gangway & Pier Railings	Complete
Reddie Point Preserve	Gangway and Floating Dock	Complete
Riverside Arts Market	Floating Docks	Complete
St. Johns Marina Boat Landing	Gangway and Floating Docks	Complete
Stinson Park	Gangway & Fence	Complete
Curtis E. Johnson Boat Ramp	Floating Dock	Complete

Water Access Facilities Hurricane Damage October 2018 Update

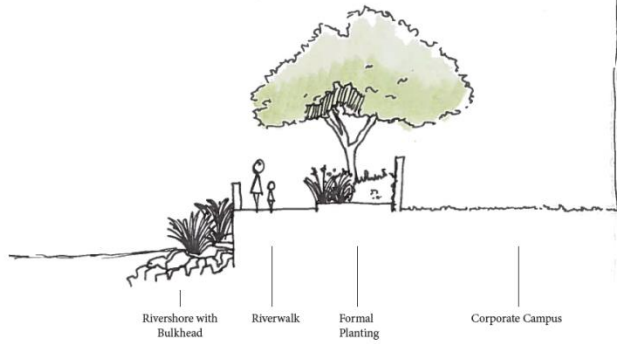
- Sites with all Facilities Open
- Sites with some Facilities Damaged



Riverwalk Design Standards

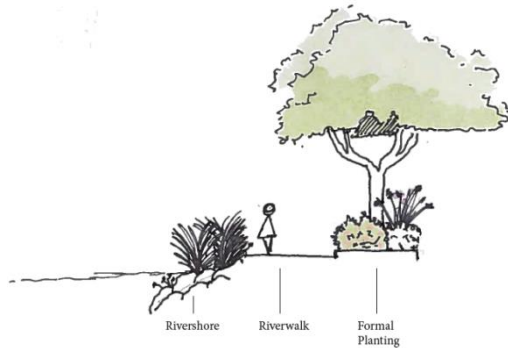
- Landscape
 - Shade
 - Integrated experience, Northbank & Southbank
 - Differences based on proximity to river/rip-rap locations, nodes, sub-nodes
 - Long term maintenance plans
- Hardscape
- Site Furnishings
 - All powder coated steel, less maintenance
 - Integration with node, sub-node location, color

RIVERWALK ZONE

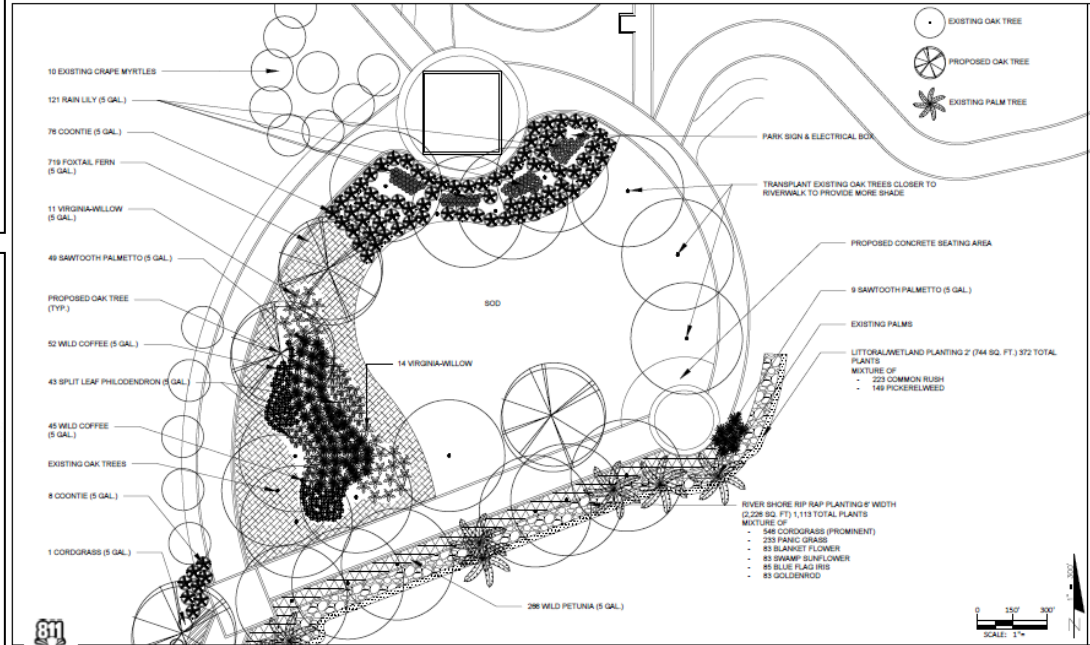


Rivershore with Bulkhead | Riverwalk | Formal Planting | Corporate Campus

RIVERSHORE ZONE SLOPED AREAS ADJACENT TO THE RIVER



Rivershore | Riverwalk | Formal Planting

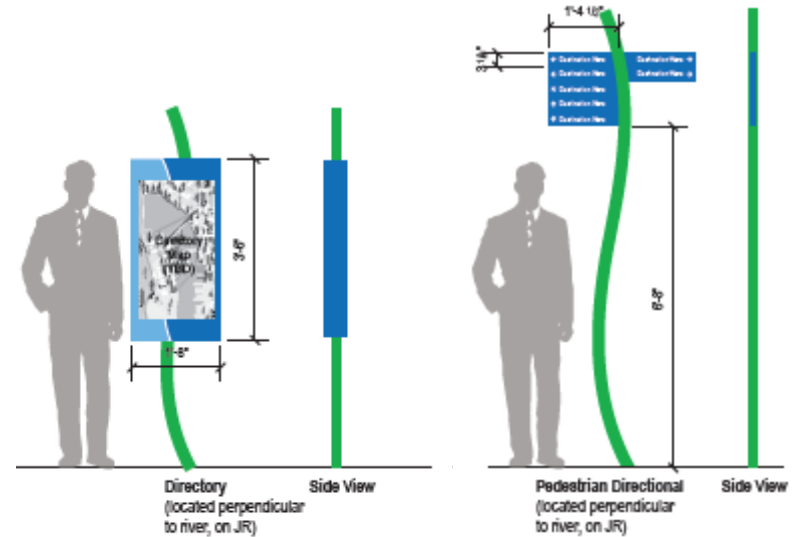
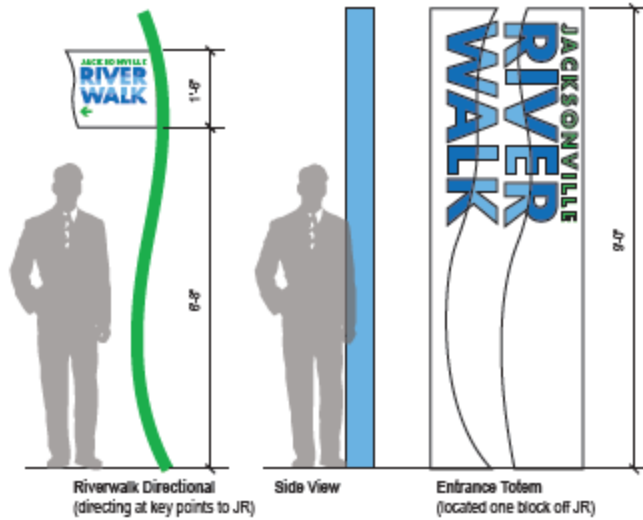
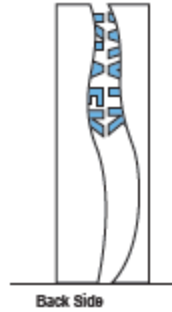


- 10 EXISTING GRAPE MYRTLES
- 121 RAIN LILY (5 GAL.)
- 76 COONTIE (5 GAL.)
- 719 FOXTAIL FERN (5 GAL.)
- 11 VIRGINIA-WILLOW (5 GAL.)
- 49 SAWTOOTH PALMETTO (5 GAL.)
- PROPOSED OAK TREE (TYP.)
- 52 WILD COFFEE (5 GAL.)
- 43 SPLIT LEAF PHLOEDENDRON (5 GAL.)
- 45 WILD COFFEE (5 GAL.)
- EXISTING OAK TREES
- 8 COONTIE (5 GAL.)
- 1 CORDGRASS (5 GAL.)
- 14 VIRGINIA-WILLOW
- 286 WILD PETUNIA (5 GAL.)
- EXISTING OAK TREE
- PROPOSED OAK TREE
- EXISTING PALM TREE
- PARK SIGN & ELECTRICAL BOX
- TRANSPLANT EXISTING OAK TREES CLOSER TO RIVERWALK TO PROVIDE MORE SHADE
- PROPOSED CONCRETE SEATING AREA
- 9 SAWTOOTH PALMETTO (5 GAL.)
- EXISTING PALMS
- LITTORAL/METLAND PLANTING 2' (244 SQ. FT.) 372 TOTAL PLANTS:
 - 225 COMMON RUSH
 - 148 PICKERWEED
- RIVER SHORE RIP RAP PLANTING 4' WIDTH (2,208 SQ. FT.) 1,113 TOTAL PLANTS:
 - 546 CORDGRASS (PROMINENT)
 - 239 PANIC GRASS
 - 83 BLANKET FLOWER
 - 83 SWAMP SUNFLOWER
 - 85 BLUE FLAG IRIS
 - 83 GOLDENROD

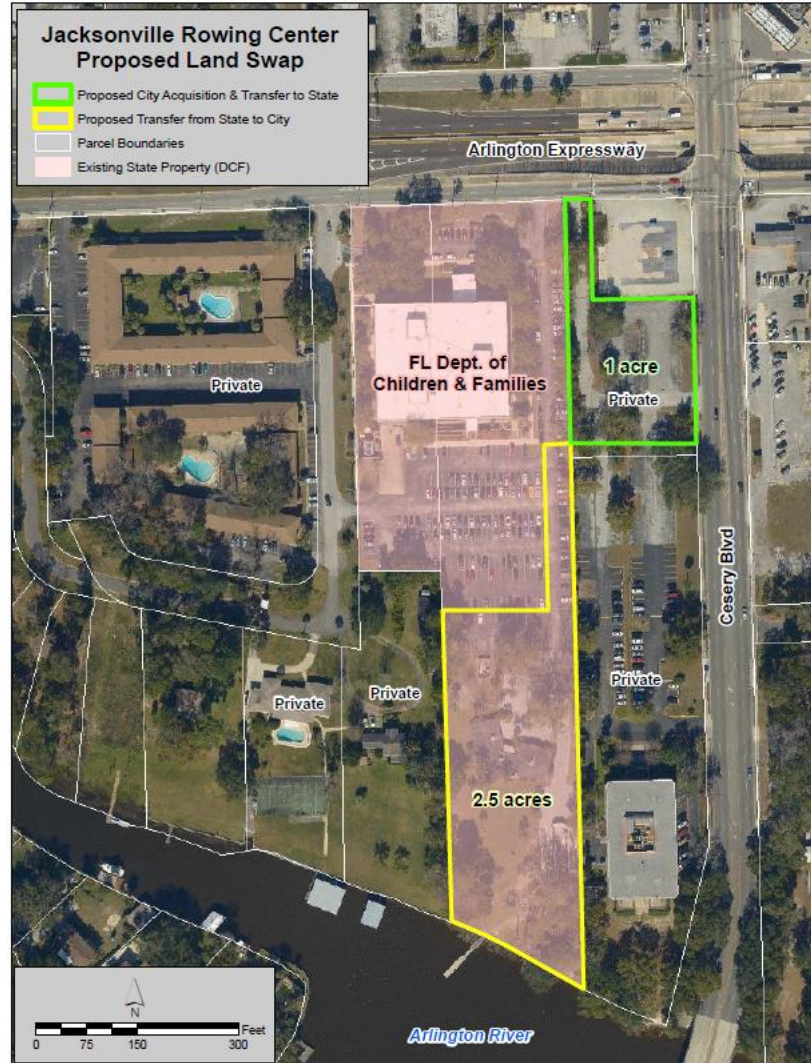
			MATCH TO SHEET 2		CITY OF JACKSONVILLE, FLORIDA DEPARTMENT OF PUBLIC WORKS DATE: 7/26/2018 CH: [] PREP: E.T. # []	Gefen Landscape Plan SHEET: 1
ENGINEER OF RECORD: CITY OF JACKSONVILLE 214 N. MOGAN ST. JACKSONVILLE, FL 32202	Where Florida Begins.					



Riverwalk Wayfaring



Rowing Center



Rowing Center

DEPARTMENT OF CHILDREN & FAMILY PARKING LAYOUT

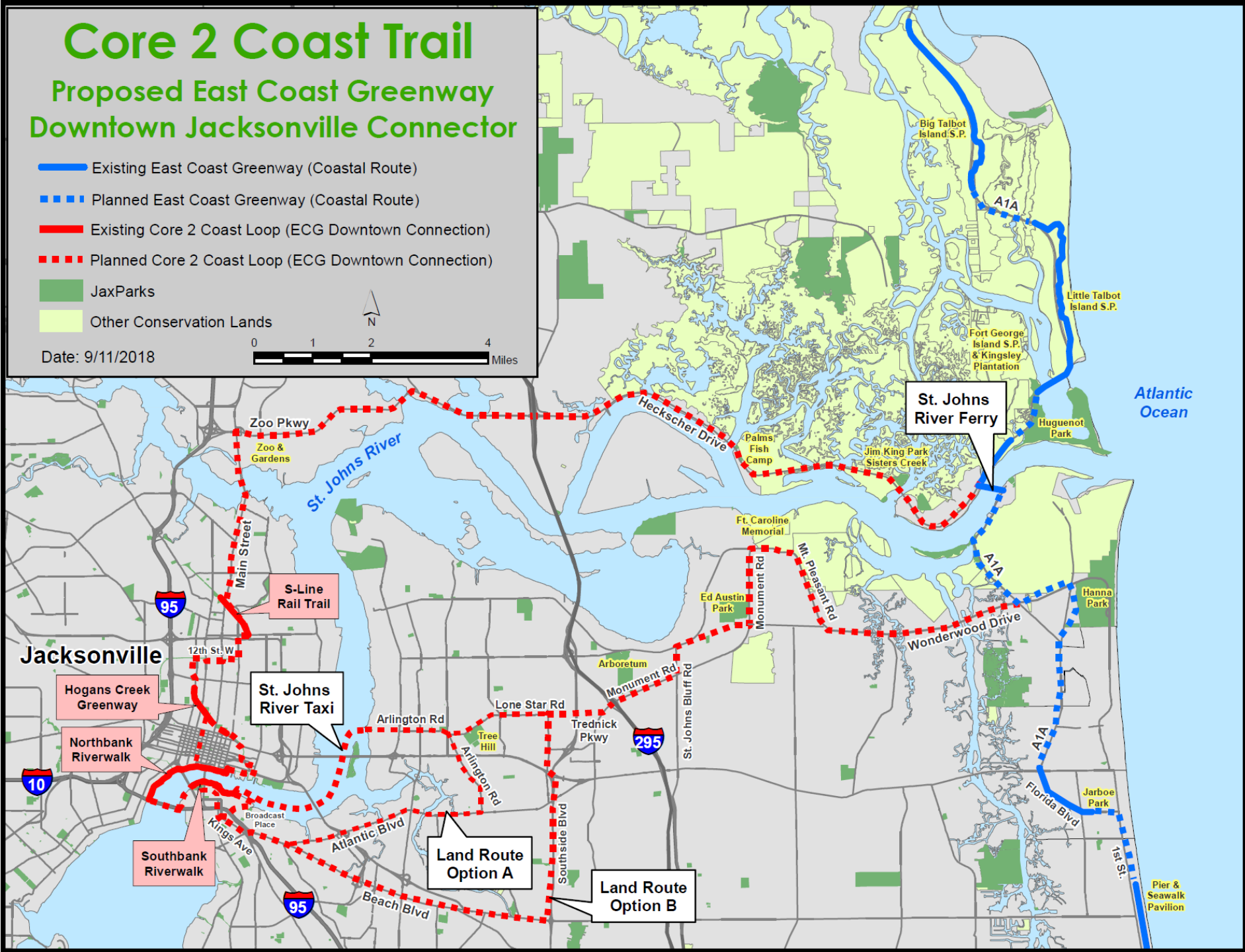
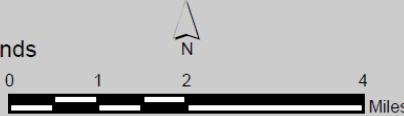


Core 2 Coast Trail

Proposed East Coast Greenway Downtown Jacksonville Connector

- Existing East Coast Greenway (Coastal Route)
- Planned East Coast Greenway (Coastal Route)
- Existing Core 2 Coast Loop (ECG Downtown Connection)
- Planned Core 2 Coast Loop (ECG Downtown Connection)
- JaxParks
- Other Conservation Lands

Date: 9/11/2018



Jacksonville

St. Johns River Ferry

St. Johns River Taxi

Land Route Option A

Land Route Option B

Atlantic Ocean

Pier & Seawalk Pavilion